

Tactics Legend

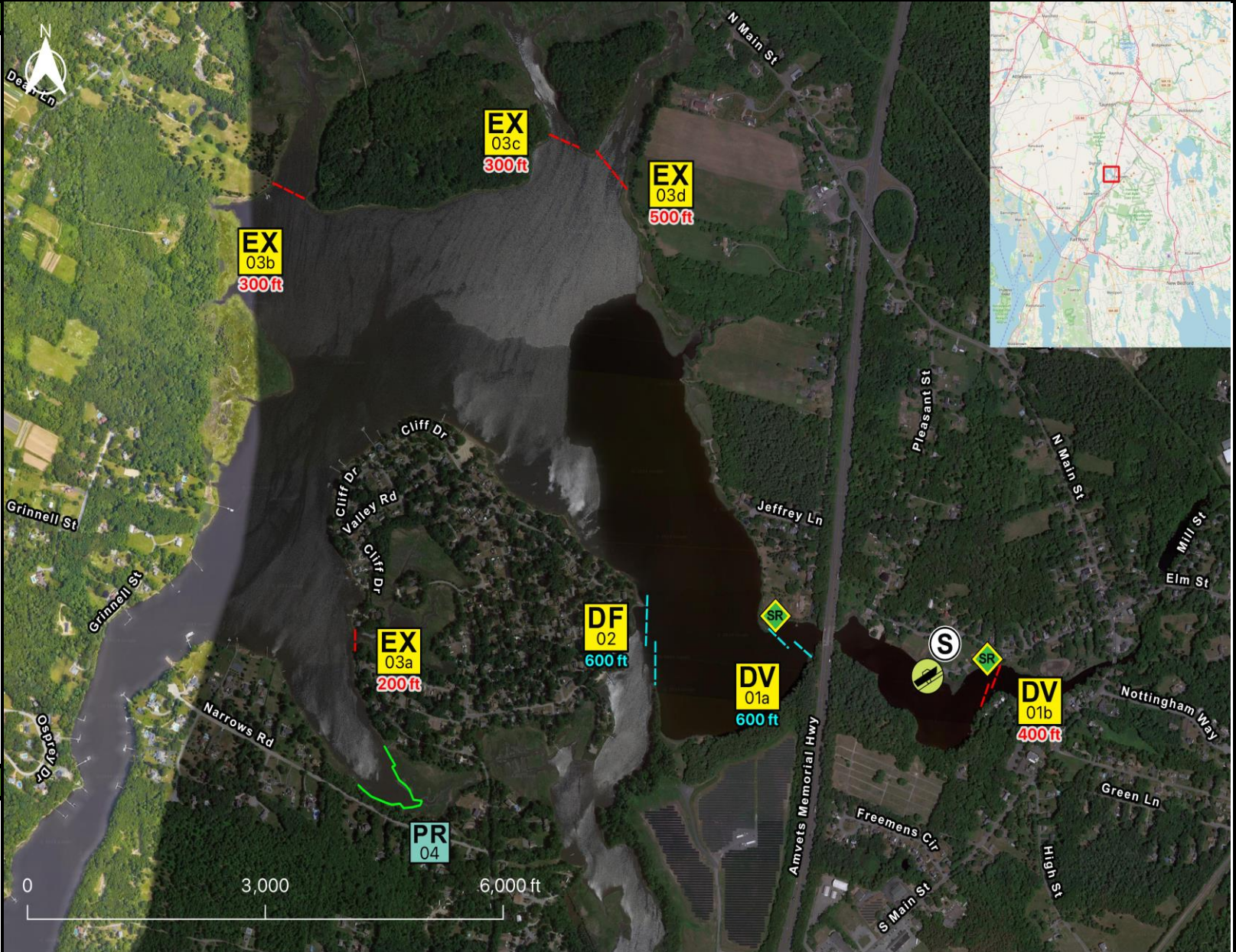
- DF** Deflection Booming
- DV** Diversion Booming
- EX** Exclusion Booming
- FO** Free Oil Recovery
- PR** Passive Recovery
- SR** Shoreside Recovery
- S** Staging Area
-  Boat Ramp
- BB** Beach Berm
- TG** Tide Gate
-  Protected-Water Boom
-  Open-Water Boom
-  Snare/ Sorbent Boom

Equipment - All Tactics

Boom(ft)	2900
Marine anchors	16
Shore anchors	14
Sorbent Boom(ft)	1300
FO Recovery Sys	0
Shore Responders	2
Boat Responders	6
Boats	2

Version

2/7/2024



Response Trailer, Tactics Deployment, and Responder Safety Information










A total of **3** state response trailers are required to implement all the tactics in this GRS. Responders should always consider on-scene conditions before deploying GRP tactics. Tactics may not be safe or effective under certain conditions. Responder safety should always be the first priority.

Location

**Latitude:** 41°47'54" N  
**Longitude:** 71°5'5" W  
**NOAA Chart #** 13226

# Geographic Response Strategy

Assonet Bay MHB12

Tactic #	Purpose	Response Equipment	Deployment Resources	Deployment Notes
<b>DV-01a</b> 	Redirect spilled oil from one location or direction of travel to a specific site for recovery.	600 ft protected water boom 3 marine anchor system 2 shoreline anchor system	2 shore responders 1 response boats 3 boat responders	Tend through tidal changes. Deploy boom as depicted to divert incoming oil to the collection site. Anchor every 200-300'. Adjust angle as necessary to reduce entrainment. Set up shoreside recovery and tend throughout tide. Deploy shoreside anchor first. Alternate deployment with tide - reset during slack.
			Testing Date	
<b>DV-01b</b> 	Redirect spilled oil from one location or direction of travel to a specific site for recovery.	400 ft protected water boom 2 marine anchor system 2 shoreline anchor system	2 shore responders 1 response boats 3 boat responders	Tend through tidal changes. Deploy boom as depicted to divert incoming oil to the collection site. Anchor every 200-300'. Adjust angle as necessary to reduce entrainment. Set up shoreside recovery and tend throughout tide. Deploy shoreside anchor first.
		8/12/13	Testing Date	
<b>DF-02</b> 	Direct spilled oil away from a location to be protected or to change the course of the slick.	600 ft protected water boom 3 marine anchor system 2 shoreline anchor system	2 shore responders 2 response boats 6 boat responders	Tend through tidal changes. Deploy boom as depicted to deflect incoming oil away from sensitive areas. Anchor every 200-300'. Deploy shoreside anchor first. Alternate deployment with tide - reset during slack.
			Testing Date	
<b>EX-03a</b> 	Prohibit oil slicks from entering a sensitive area	200 ft protected water boom 1 marine anchor system 2 shoreline anchor system	2 shore responders 1 response boats 3 boat responders	Tend through tidal changes. Deploy boom as depicted to exclude oil from sensitive areas. Anchor every 200-300'. Not tide dependent. Deploy shoreside anchor first.
			Testing Date	
<b>EX-03b</b> 	Prohibit oil slicks from entering a sensitive area	300 ft protected water boom 2 marine anchor system 2 shoreline anchor system	2 shore responders 1 response boats 3 boat responders	Tend through tidal changes. Deploy boom as depicted to exclude oil from sensitive areas. Anchor every 200-300'. Not tide dependent. Deploy shoreside anchor first.
			Testing Date	
<b>EX-03c</b> 	Prohibit oil slicks from entering a sensitive area	300 ft protected water boom 2 marine anchor system 2 shoreline anchor system	2 shore responders 1 response boats 3 boat responders	Tend through tidal changes. Deploy boom as depicted to exclude oil from sensitive areas. Anchor every 200-300'. Not tide dependent. Deploy shoreside anchor first.
			Testing Date	
<b>EX-03d</b> 	Prohibit oil slicks from entering a sensitive area	500 ft protected water boom 3 marine anchor system 2 shoreline anchor system	2 shore responders 1 response boats 3 boat responders	Tend through tidal changes. Deploy boom as depicted to exclude oil from sensitive areas. Anchor every 200-300'. Not tide dependent. Deploy shoreside anchor first.
			Testing Date	
<b>PR-04</b> 	Remove spilled oil by collecting it in a sorbent material	1300 ft sorbent boom 1300 ft sorbent pom-poms 37 anchor stakes	2 shore responders	Place and stake snare or sorbent boom in areas that are likely to pool and collect oil and across the mouths of the streams and intertidal areas. Use snare boom for persistent oils and sorbent boom for non-persistent oils. Approach the streams and intertidal areas on rising tide. Replace as necessary to maximize oil recovery.
		N/A	Testing Date	
<b>SR-05</b> 	Remove spilled oil that has been diverted to a designated recovery site accessible from shore	2 skimming system 2 storage tank or bladder 2 hoses, pumps, fittings	2 shore responders	Set up shoreside recovery tactic at general location depicted on map. Some access points located at private residences. Access may be difficult.
		N/A	Testing Date	

**Local contacts**

Berkley Fire Department	<a href="tel:508-822-7516">508-822-7516</a>
Berkley Harbormaster (Berkley PD)	<a href="tel:508-822-7040">508-822-7040</a>
Berkley Conservation Commission	<a href="tel:508-828-2682">508-828-2682</a>
Freetown Fire Department	<a href="tel:508-763-4828">508-763-4828</a>
Freetown Harbormaster	<a href="tel:508-644-2202">508-644-2202</a>
Freetown Conservation Commission	<a href="tel:508-644-3691">508-644-3691</a> x7
Freetown EMA/LEPC	<a href="tel:508-644-2200">508-644-2200</a>
Dominion Energy Terminal	<a href="tel:508-646-5000">508-646-5000</a>
Mass. Dept of Environmental Protection (24 Hours)	<a href="tel:888-304-1133">888-304-1133</a>
U.S. Coast Guard (24 Hours)	<a href="tel:508-457-3211">508-457-3211</a>



*Assonet River at Hathaway Park Boat Ramp and site of DV-01b*

**Resources Protected**

Marine Mammals	<b>None identified</b>
Fish	Anadromous, Catadromous, Finfish
Invertebrates	Lobster, crab, shrimp, shellfish
Birds	<b>None identified</b>
Threat/End. Species	<b>None identified</b>
Cultural	<b>None identified</b>
Subsistence	Fish, Shellfish
Human Use	Beach, Lock and Dam
Commercial Fishing	<b>None identified</b>
Land Management	Wild and Scenic River
Coastal Habitat	Beach, Marsh/Swamp, Tidal Flats



*Pine Island at Shepherds Cove/Assonet Shores (EX-03a)*

**Special Considerations & Navigational Hazards**

Much of Assonet Bay and the eastern portion of the Assonet River is very shallow. Vessel operators should have local knowledge.